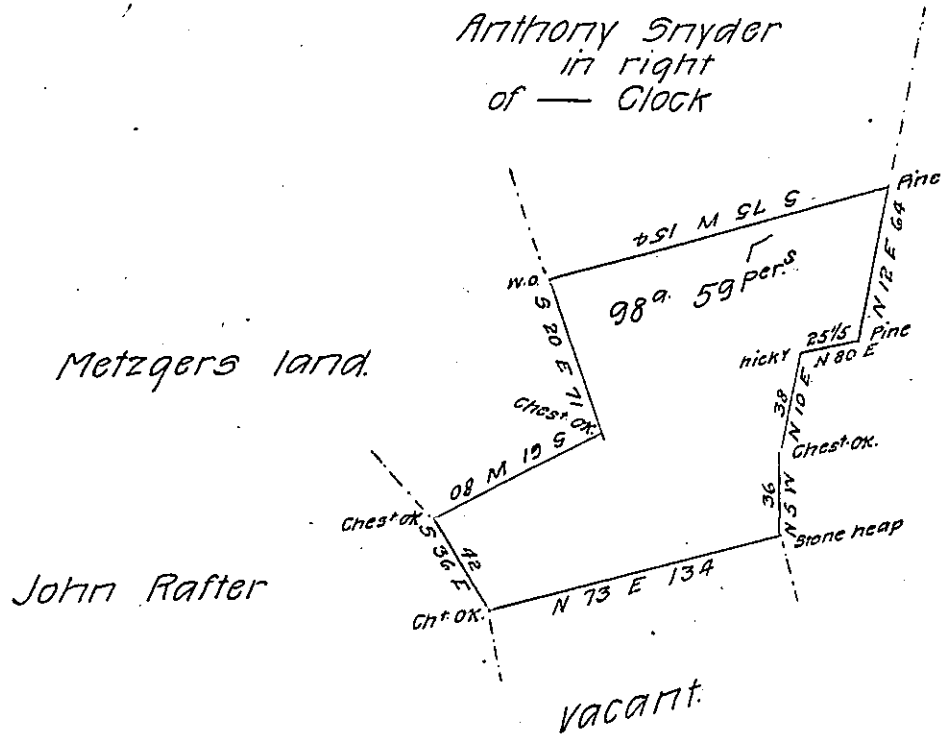


89 2 29



A draught of ninety eight acres and fifty nine perches of land with six per Cent for roads situate, once in Cumberland now in Mifflin County, which appears to have been surveyed in the year 1803 in pursuance of a warrant to Anthony Snyder dated 23^d July 1773 Examined and corrected 28th December 1810.

Michael M. Monahan D.S.

To Andrew Porter Esquire
Surveyor General of Pennsylvania

IN TESTIMONY that the above is a copy of the original remaining on file in the Department of Internal Affairs of Pennsylvania, made conformably to an Act of Assembly approved the 16th day of February, 1833, I have hereunto set my Hand and caused the Seal of said Department to be affixed at Harrisburg, this fourteenth day of December 1906.

Leach R. ...
Secretary of Internal Affairs.